

# F Chromatic

Hnwgu

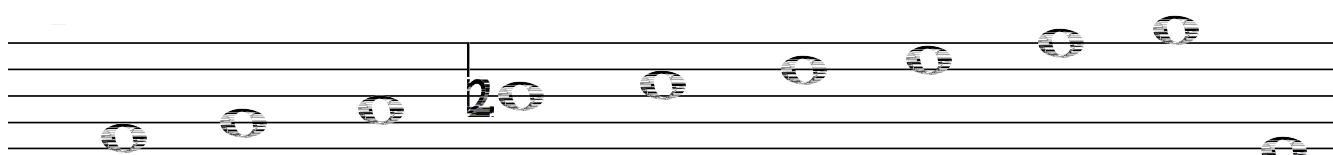
H H% I I% C C% D E E% F F% G H  
H I d I Cd C Dd D E Fd F Gd G H

Diagram illustrating the F Chromatic scale on a piano keyboard. The keys are numbered 3 through 35. The diagram shows fingerings and fingering percentages for each note:

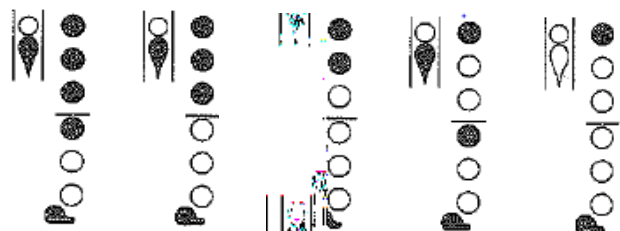
Key Number	Note	Fingering	Fingering %
3	H	1	100%
4	H%	1	100%
5	I	2	100%
6	I%	2	100%
7	C	3	100%
8	C%	3	100%
9	D	4	100%
:	E	5	100%
;	E%	5	100%
32	F	1	100%
33	F%	1	100%
34	G	2	100%
35	H	2	100%

# CONCERT F

Hnwvg



"H" "I" "C" "Dd" "E" "F" "G" "H" "I" "G"  
**DO RE MI FA SO LA TI DO**



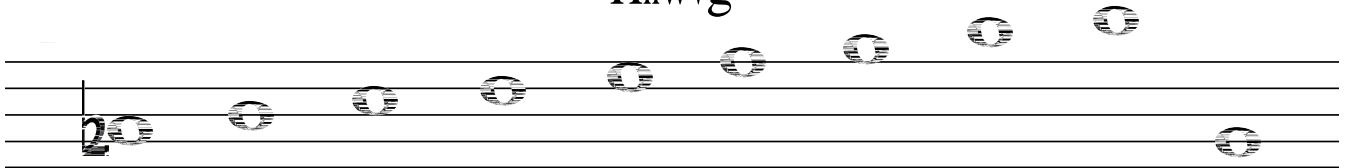


### CONCERT Eb

Hnw

# CONCERT Ab

Hnwvg



Cd Dd E Fd Gd H I Cd Dd I  
**DO RE MI FA SO LA TI DO**

